

# Food Service & Retail

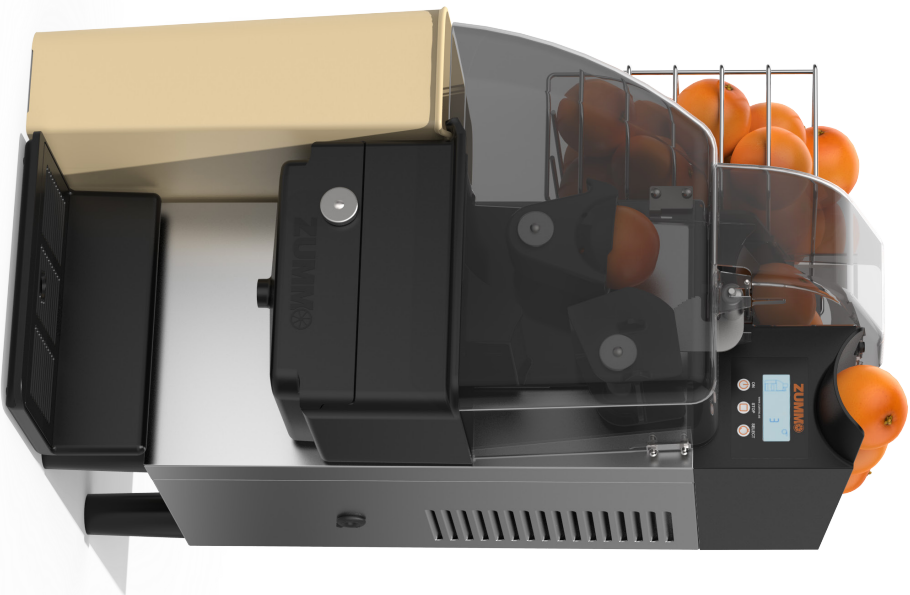
Our products have been conceived to satisfy  
any needs in terms of space and yield  
required by any kind of business model.

# Z1 Nature

The Z1 Nature is the most compact juicer within Zummo's line. It has been conceived to provide the most efficient and profitable solution for those businesses having a very limited space and registering less than 30 glasses per day of output.



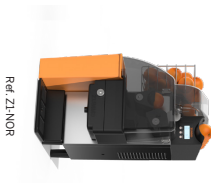
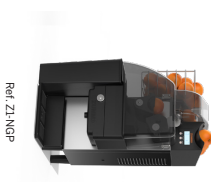
\*Basket not included



Ref. Z1-NBE

\*The juicer Z1 can only squeeze oranges

AVAILABLE COLORS



TECHNICAL FEATURES

Voltage	230 V - 50 Hz / 220 V - 60 Hz / 120V - 60Hz
Motor	Single phase 0.16 CV
Energy consumption	Energy consumption on standby 1.8 W
Automatic	Yes
Standby system	Yes
Weight	65 lbs
Feeder	2.2 lbs
Fruits per minute	6,5
Bin capacity	2.38 gal
Diameter of fruit	2.16" - 2.75" / 2.48" - 2.95" - Opt: 2.56" - 3.15" / 2.95" - 3.54"
Dimensions	26.67"(h) x 13.39"(w) x 15.24"(l)
Safety	Blocking sensors
Programmer	Yes

ACCESSORIES

Containers

- 1 Ref. 1903008A-1
- 2 Ref. 1903008A-2
- 3 Ref. 1903008A-3
- 4 Ref. 1903008A-4



Capacity: 2.38 gal



Large cup kit

Ref. 1908020



· Ø 2.56" - 3.54"  
 · Components: 1 large cup + 1 large ball + 1 elastic accessory + 1 callibrator  
 Ø 3.54"

Basket

Ref. 1902016



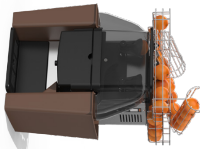
· Stores up to 5.5 lbs of fruit

# Z06 Nature

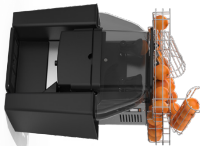
The Z06 Nature is the Zummo's most versatile model. Any kind of citrus fruit can be squeezed, and even pomogrates. It is a great choice for those businesses seeking to offer original fruit juice blends and a larger variety of fresh fruit juices.



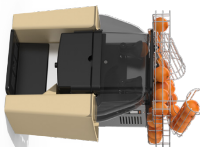
AVAILABLE COLORS



Ref. Z06-NBR



Ref. Z06-NGP



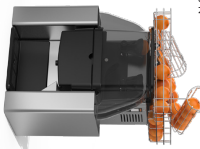
Ref. Z06-NBE



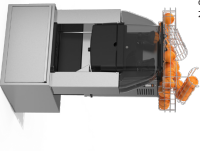
TECHNICAL FEATURES

Voltage	230 V - 50 Hz, 220 V - 60 Hz, 120 V - 60 Hz
Motor	Single phase 0,33 CV
Energy consumption	275 W
Automatic	Yes
Weight	116 lbs
Feeder	3.3 lbs
Fruits per minute	10
Bin capacity	5.8l gal
Diameter of fruit	2.16" - 2.95" / 2.25" - 3.54" Out 1.77" 2.36"
Dimensions	31.99" (h) x 21.57" (w) x 16.97" (d)
Safety	Blocking sensors
Programmer	Yes
Basket capacity	1323 lbs
Filter	Automatic

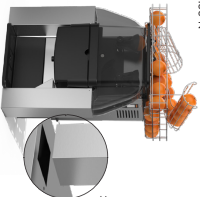
Z06 Nature Inox  
Ref. Z06-N



Z06 Nature Compact  
Ref. CP06-N



Z06 Nature Counter Top  
Ref. ZM06-N

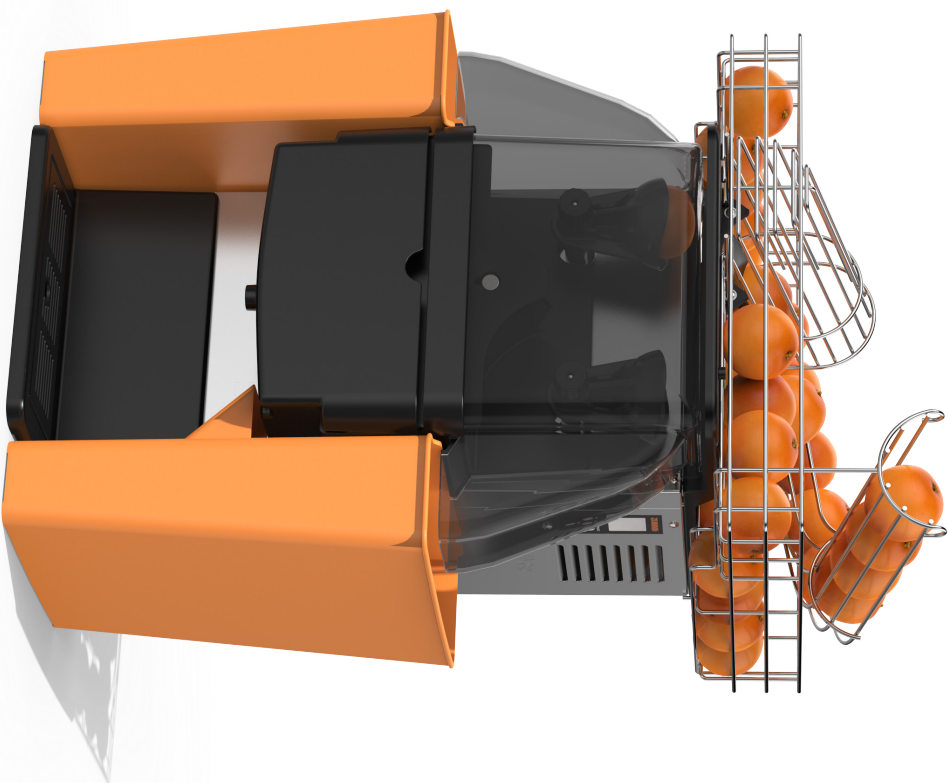


- Waste bin: 5.8l gal
- Weight: 123 lbs
- 31.93" (h) x 20" (w) x 17.13" (d)

- Waste bin: 10.3 gal
- Weight: 138 lbs
- 42.76" (h) x 20" (w) x 17.13" (d)

· Adaptable chutes for counters

· Chutes with opening to connect with the counter



Ref. Z06-NOR

**Bins**  
 1 Ref. 0508039-1  
 2 Ref. 0508039-2  
 3 Ref. 0508039-3  
 4 Ref. 0508039-4



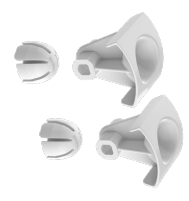
- Suitable for all Z06 Nature models  
 - Capacity: 5.81 gal

**Stainless steel bins**  
 Ref. 0508040



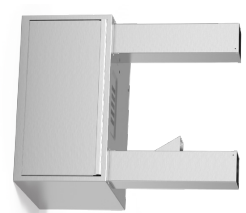
- Suitable for all Z06 Nature models  
 - Capacity: 5.81 gal

**Small cup kit**  
 Ref. 0505026



- Suitable for all Z06 Nature  
 - Squeezes fruit of Ø 2.09" - 2.36"  
 - Kit consists of: 2 small balls + 2 small cups

**Peel collection drawer**  
 Ref. 0509001-N

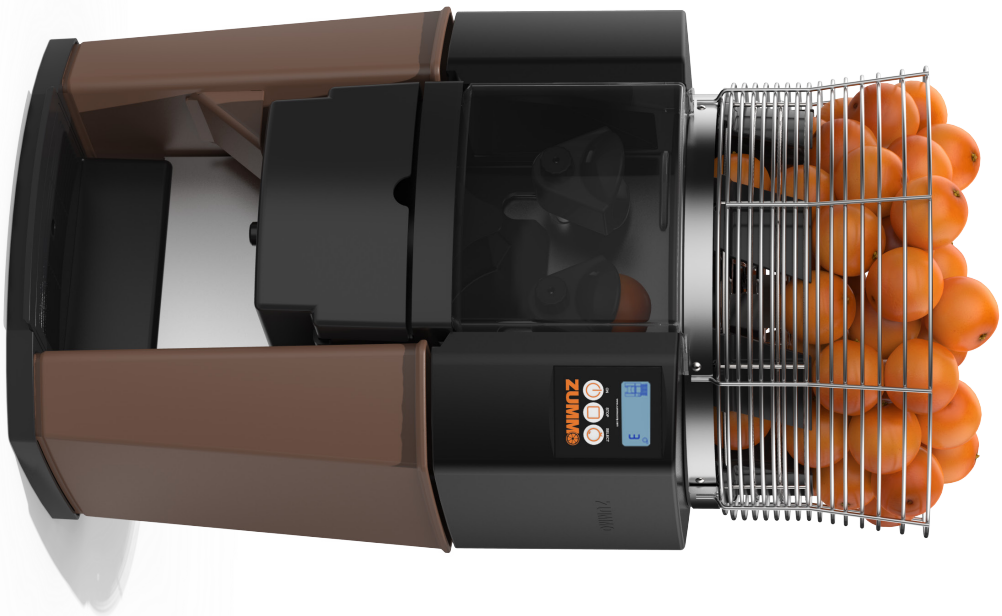


- Capacity: 10.3 gal  
 - Weight: 33.07 lbs  
 - 10.87"(h) 20"(w) x 17.13"(l)  
 - Stainless steel



# Z14 Nature

The Z14 Nature juicer is the right equipment for those businesses registering a high juice consumption. Additional autonomy can be obtained thanks to its large basket and waste bins. This is a key aspect for buffets, restaurants and the retail sector.



Ref. Z14-NBR

AVAILABLE COLORS



Ref. Z14-NOR



Ref. Z14-NGP



Ref. Z14-NBE



TECHNICAL FEATURES

Voltage	230 V - 50 Hz, 220 V - 60 Hz, 120 V - 60 Hz.
Motor	Motordatic 0.33 CV
Energy consumption	275 W
Weight	129 lbs
Fruits per minute	16
Bin capacity	3.7 (2 x 1.85) gal
Diameter of fruit	2.16" - 2.95" / 2.75" - 3.54" Opt: 1.77" - 2.36" / 2.1" - 2.36"
Dimensions	32.36" (h) x 18.82" (w) x 18.11" (l)
Safety	Blocking sensors
Basket capacity	20 lb
Programmer	Yes
Filter	Automatic

Z14 Nature Inox  
Ref. Z14-N



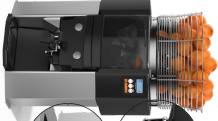
- Stainless steel bins
- Bins capacity: 4.8 gal
- Weight: 134 lbs
- 32.36" (h) x 18.82" (w) x 18.11" (l)

Z14 Nature Self Service  
Ref. Z14-N



- Tap which activates the machine
- Bins capacity: 4.8 gal
- Weight: 134 lbs
- 32.36" (h) x 18.82" (w) x 18.11" (l)

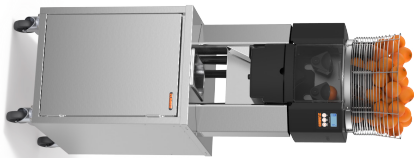
Z14 Nature Self Service Counter Top  
Ref. Z14-N



- Tap which activates the machine
- Adaptable chutes for counters
- Stainless steel chutes
- Weight: 129 lbs
- 32.36" (h) x 18.82" (w) x 18.11" (l)

1 Chutes with opening to connect with the counter

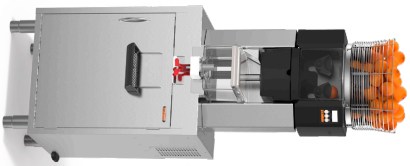




- Waste: Basket 15 gal capacity
- Weight: 200 lbs
- 62.99" (h) x 19.69" (w) x 23.62" (l)
- Stainless steel cabinet

**Z14 Nature Cabinet**  
Ref: CGJ4C-N50

- Z14 Nature Self Service Cabinet G 50**  
Ref: GGD4C-N50
- Top which activates the machine
  - Waste: Basket 15 gal capacity
  - Weight: 224 lbs
  - 64.76" (h) x 19.69" (w) x 23.62" (l)
  - Stainless steel cabinet
  - Gastro room tray



**ACCESSORIES**

**Full drip tray**

Ref: H05034A-1



- Suitable for all Z14 Nature
- Includes: dispensing tap

**Bins**

Ref: H4080421  
Ref: H4080422  
Ref: H4080423  
Ref: H4080424



- Suitable for the Z14 Nature
- Capacity: 3.7 (2 x 1.85) gal

**Stainless steel bins**

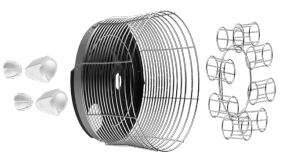
Ref: H408043



- Suitable for the Z14 Nature and Z14 Nature Self Service models
- 13.98" (h) x 11.65" (w) x 4.21" (l)
- Capacity: 4.8 gal
- Stainless steel

**Small squeezing kit**

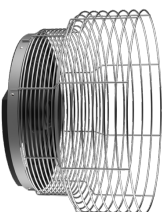
Ref: L403029



- Capacity of 20 lbs of fruit
- Includes: 2 small cups + 2 small balls + ring + hopper basket with guide

**Hopper Basket 35 lbs**

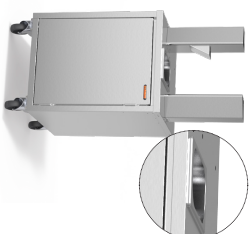
Ref: H408026A1



- Capacity of 35 lbs of fruit
- Kit consists of: hopper and hopper chute

**Cabinet G**

Ref: MDD5P14-N



- Suitable for the Z14 and the Z14 Self Service models
- 30.71" (h) x 19.69" (w) x 23.62" (l)
- Weight: 75 lbs
- Gastro room tray



# Z40 Nature

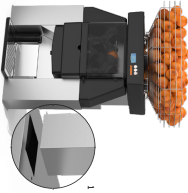
The Z40 Nature is the perfect juicer to satisfy the needs from the mass catering industry and large retail outlets. Up to 40 fruits per minute can be squeezed, which enables to have a large amount of juice in a very short time. Typical peaks in demand registered by these businesses can be handled with the Z40 juicer.

TECHNICAL FEATURES

Voltage	230 V - 50 Hz, 220 V - 60 Hz, 120V - 60 Hz
Motor	Single phase 0.5 CV
Energy consumption	410 W — 2.4 W Stand by
Weight	180 lbs
Fruits per minute	40
Bin capacity	7.93 gal (2 x3.96 gal)
Diameter of fruit	Ø 2.1" - 3" cup kit, Optional: Ø 2.5" - 3.5" L kit, Ø 3"-4" XL kit Ø 1.6" - 2.4" XS kit
Dimensions	38.58" (l) x 23.43" (w) x 21.65" (h)
Safety	Blocking sensors
Programmer	Yes
Basket capacity	44 lb
Filter	Automatic



**Z40 Nature Counter Top**  
Ref. Z40C-N



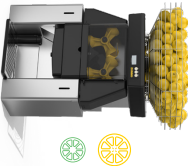
· Adaptable chutes for counters

**Z40 Nature Self Service**  
Ref. Z40S-N



· Tip which activates the machine

**Z40 Nature LM**  
Ref. Z40-N-LM



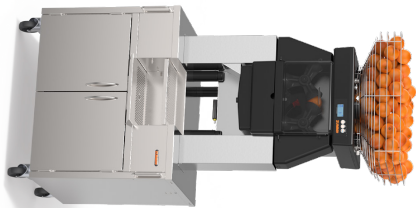
· Can squeeze all citrus. Specially design for limes and lemons  
· 25 fruits per minute



· Chutes with opening to connect with the counter



Ref. Z40-N

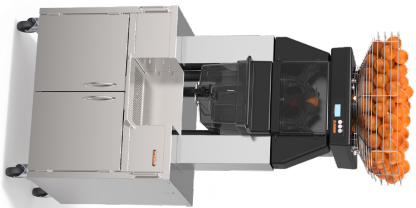


**Z40 Nature Versatile Cabinet Plus G**  
Ref: CV440C-N80

- Storage: 2 baskets with wheels
- Waste capacity: 17 gal (2x8.5 gal)
- Weight: 224 lbs
- 62.99" (h) x 24.02" (w) x 26.73" (d)
- Stainless steel cabinet
- Gastronorm tray
- Basket capacity: 44 lbs

- Top which activates the machine
- Storage: 2 baskets with wheels
- Waste capacity: 17 gal (2x8.5 gal)
- Weight: 224 lbs
- 62.99" (h) x 24.02" (w) x 26.73" (d)
- Stainless steel cabinet
- Gastronorm tray
- Basket capacity: 44 lbs

**Z40 Nature SS Versatile Cabinet Plus G**  
Ref: CV440C-N80 + 210945A-1



**Z40 Nature Service Versatile Cabinet Plus G**  
Ref: CV440C-N80 + 210916D-5

- Storage: 2 baskets with wheels
- Waste capacity: 17 gal (2x8.5 gal)
- Weight: 224 lbs
- 62.99" (h) x 24.02" (w) x 26.73" (d)
- Stainless steel cabinet
- Gastronorm tray
- Tank: 2 gal
- Basket capacity: 44 lbs

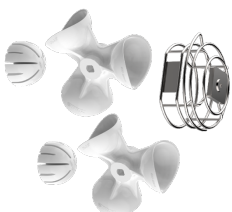
**ACCESSORIES**

**Large squeezing kit**  
Ref: 210536



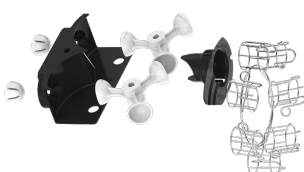
- Ø 2.5" - 3.5"
- Consists of: 2 large balls of Ø 3.15" + 2 large cups of Ø 3.46" + 1 separator 2.5" - 3.5"

**Extra-large squeezing kit**  
Ref: 210537



- Ø 3" - 3.9"
- Consists of: 2 extra-large balls of 3.9" + 2 extra-large cups + 1 separator 3" - 3.9"

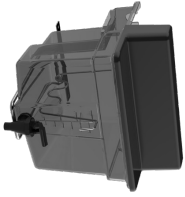
**XS squeezing kit**  
Ref: 210332A



- Ø 1.6" - 2.4"
- Consists of: 2 XS balls + 2 XS cups + 1 XS ring + XS blade

ACCESSORIES

**Full tank**  
Ref. 210816D-5



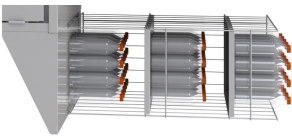
- Suitable for the Z40 Service model
- Tank of 2 gal
- Dispensing tap
- Includes: 1 dispensing tap, 1 manual stirrer, tank support, tank lid, transparent plastic tank

**Full drip tray**  
Ref. 210545A-1



- Suitable for the Z40 Self Service model
- Dispensing tap
- With standing support (Ref. 210554A-1)

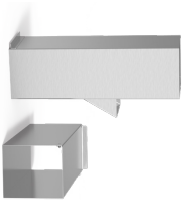
**Bottle rack**  
Ref. 031600A-N



- Can be installed on either side of the cabinet
- Suitable for all\* units
- 29.72"(H) x 13.58"(W) x 23.62"(D)
- Weight: 16 lbs

ACCESSORIES

**Stainless steel chutes**  
Ref. 210932



- Suitable for the Z40 Nature
- Stainless steel

**Cabinet Store**  
Ref. MWP40



- Suitable for the Z40 and Z40 Self Service models
- 30.71"(H) x 31.5"(W) x 26.73"(D)
- Weight: 106 lbs
- Storage: 2 baskets with wheels
- Waste capacity: 17 gal (2x8.5 gal)

Z40

Z40

\*The bottle rack is not available for Fresh models

\*Top drip tray included

# Comparative sheet



Z1Nature	Z25 Nature	Z26 Nature Ion	Z26 Nature Compact	Z24 Nature	Z14 Ion	Z24 Nature Self Service Compact G	Z40 Nature	Z40 Nature Self Service	Z20 Nature Self Service Compact G	Z20 Nature Self Service Compact Red
2667 (h) x 1339 (w) x 1524 (l)	3133 (h) x 2157 (w) x 859 (l)	3133 (h) x 2070 (w) x 1713 (l)	42.76 (h) x 2070 (w) x 1713 (l)	32.26 (h) x 18.82 (w) x 18.11 (l)	32.26 (h) x 18.82 (w) x 18.11 (l)	62.99 (h) x 24.02 (w) x 23.82 (l)	38.58 (h) x 23.43 (w) x 21.65 (l)	38.58 (h) x 23.43 (w) x 21.65 (l)	38.58 (h) x 23.43 (w) x 21.65 (l)	38.58 (h) x 23.43 (w) x 21.65 (l)
6.5	10	10	10	16	16	16	40	40	40	40
3.3 lbs	13.23 lbs	13.23 lbs	13.23 lbs	20 lbs	20 lbs	20 lbs	44 lbs	44 lbs	44 lbs	44 lbs
216" 3.54"	177" 3.54"	177" 3.54"	177" 3.54"	177" 3.54"	177" 3.54"	177" 3.54"	2.09" 3.94"	2.09" 3.94"	2.09" 3.94"	2.09" 3.94"
65 lbs	116 lbs	123 lbs	134 lbs	129 lbs	134 lbs	224 lbs	180 lbs	180 lbs	267/86 lbs	268 lbs
165 W stand by 1.8 W	275 W	275 W	275 W	275 W	275 W	275 W	410 W stand by 2.4 W	410 W stand by 2.4 W	410 W stand by 2.4 W	410 W stand by 2.4 W
Yes	Yes	Yes	Yes	Yes	Yes	Yes	Yes	Yes	Yes	Yes
2.4 gal	5.8 gal	5.8 gal	10.3 gal	37 gal	4.8 gal	Bag	7.93 gal	7.99 gal	29.06 gal	29.06 gal
0.16"	0.12" Self cleaning	0.12" Self cleaning	0.12" Self cleaning	0.12" Self cleaning	0.12" Self cleaning	0.12" Self cleaning	0.12" Self cleaning	0.12" Self cleaning	0.12" Self cleaning	0.12" Self cleaning
-	-	-	-	-	Yes	Yes	-	Yes	Yes	-
-	-	-	-	-	-	Yes	-	-	-	2 gal
-	-	-	-	-	Yes	Yes	-	-	Yes	-

Versions

- Dimension Height x Width x Depth
- Feeder Capacity
- Weight
- Safety
- Filter
- Gastronomy
- Suitable Sizes
- Consumption
- Deposit
- Tip
- Pre-collision capacity

# Z222 Juice Extractor



- High performance centrifugal juicer for fruit and vegetables with a separate pulp tank – the perfect option for offering a whole range of different combinations.
- Quick and easy to clean in less than five minutes
- Magnetic disc and filter installation
- Up to half gallon of juice per minute
- Built-in motor
- Silent – the rubber base absorbs vibrations
- Feeder space of 2.95"
- Aluminium body and stainless steel bowl

## TECHNICAL FEATURES

**Voltage** 120V - 60Hz  
**Power** 800 W  
**Energy consumption** 275 W  
**Rpm** 3600 Rpm  
**Weight** 41 lbs  
**Bin capacity** 2.38 gal  
**Dimensions** 11.42" (h) 17.24" (w) x 20.16" (l)

## SPARE PARTS

**Chute accessory**  
 Ref. 220115

**Food pusher**  
 Ref. 220104

**Complete filter set**  
 Ref. 220114  
 Toothed disc Ref. 220101



# Return on the investment

Parameters		Glasses per day					
Price per case	\$25	10	20	30	40	50	60
Oranges per case	100						
Oranges per glass	4						
Volume per glass	12 oz						
Cost of the machine*	\$6,485.85						
Glass selling price	\$4						
Time to prepare a hand made juice	2.5min						
		Results					
Monthly cost of oranges		300	600	900	1200	1500	1800
Monthly income		1200	2400	3600	4800	6000	7000
Net profit		900	1800	2700	3600	4500	5400
Payback		7	4	2	2	1	1
Monthly time saving for operator		12.5 hours	25 hours	37.5 hours	50 hours	62 hours	75 hours

This example is based on the Z14 m Nature – 2018 rate

TOTAL EQUIPMENT SUPPLIERS  
 7136 S.W. 47 STREET, MIAMI, FL 33155  
 PH: 305-718-9550 FX: 305-718-9505  
 EMAIL:  
[INFO@TOTALEQUIPMENTSUPPLIERS.COM](mailto:INFO@TOTALEQUIPMENTSUPPLIERS.COM)